

# CERTIFICATE OF LOCATION OF GOVERNMENT CORNER

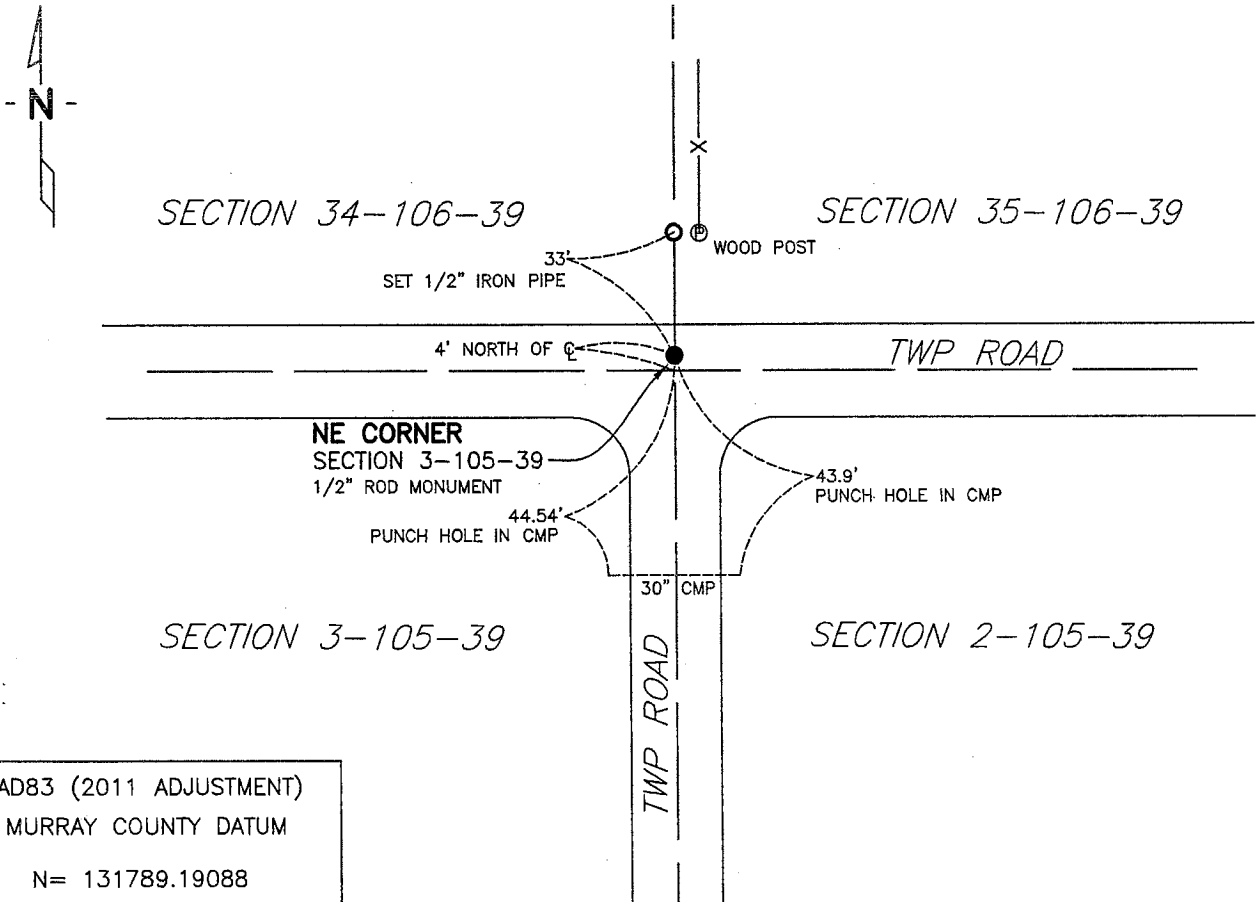
NORTHEAST Corner of Section 3, Township 105 N, Range 39 W, 5th P.M.

STATE OF MINNESOTA, County of MURRAY

At the corner location shown on the sketch:

- On 5/10/13 found a FOUND 1/2" ROD DOWN 0.5' IN GRAVEL ROAD  
DATE
- left monument as found,  lowered monument,  removed monument (explain)
- On \_\_\_\_\_ placed a \_\_\_\_\_  
DATE

## SKETCH OF REFERENCE TIES



NAD83 (2011 ADJUSTMENT)  
MURRAY COUNTY DATUM  
  
N= 131789.19088  
E= 569603.96606

I:\NRCS\M33106137\TASK11 D JANS MURRY CO\ NE 3-105-39

Statement of evidence relative to this corner location is on back of page.

I hereby certify that this document and the data contained herein was prepared by me or under my direct supervision.

Rory Jensen 9/11/2013  
Rory Jensen DATE

- Registration No. 19789
- Land surveyor,  Professional Engineer
  - County Surveyor,  County Engineer

### OFFICE OF THE COUNTY RECORDER

County of \_\_\_\_\_  
I hereby certify that this document was filed in the Co. Recorders office at \_\_\_\_\_ M. on the \_\_\_\_\_ day of SEP 13 2013 A.D., 20\_\_\_\_  
County Recorder James V. Johnson  
By \_\_\_\_\_, Deputy

DOCUMENT NO. \_\_\_\_\_

Statement of Evidence:

Northeast Corner Section 3, Township 105 North, Range 39 West

- 1861 Original Government Land Survey was done by Wellman & Smoot, US Deputy Surveyors. At 80.00 chains he set section post to Sections 2, 3, 34 and 35, drove charred stake and made mound with trench and pits as per instructions.
- May 5, 1976 Murray County Ties located an iron 38" below road. Placed 24" iron pin above iron.
- May 10, 2013 Bolton & Menk Inc. when doing a survey for NRCS Jans Easement Boundary Survey found a 1/2" rod down 0.5' in the gravel road. The crew left the monument as found. Ties were taken and are as follows:  
Punch hole West End 30" CMP - 44.54 feet  
Punch hole East End 30" CMP - 43.9 feet  
1/2" Iron set North of Corner - 33.0 feet

Ties were placed on the corner and by GPS methods it was tied into the County Coordinate System NAD 83 (2011 Adjustment).

The evidence is not conclusive as to the true corner location, however the occupational and collateral evidence suggest that this is a reasonable location as to the corner. Additional information regarding the preparation of this certificate can be obtained by contacting: Bolton and Menk, Inc., Mankato, MN.